



Royal Bermuda Yacht Club

SUPPLEMENTARY SAILING INSTRUCTIONS FOR BART'S BASH

Name of Event: BART'S BASH

Date of event: SUNDAY SEPTEMBER 16, 2018

Abbreviations:

OA	Organising Authority (Royal Bermuda Yacht Club)
BSA	Bermuda Sailing Association (National Authority)
RBVC	Royal Bermuda Yacht Club
RRS	Racing Rules of Sailing
SIs	Sailing Instructions
SSIs	Special Sailing Instructions – specific to each event
RC	Race Committee
PC	Protest Committee

1 SKIPPERS' BRIEFING

There is no skippers' briefing planned. Coaches please use your own discretion about meeting your kids before heading out to the race course.

2. SAILING INSTRUCTIONS

The SIs governing the whole event can be found [HERE on the Bart's Bash website](#).

3. SCHEDULE

- 3.1. (1) Race is scheduled and will constitute a series.
- 3.2. The scheduled time of the warning signal will be at 10:55 hours for Class 1 with 10 minute rolling starts for subsequent Class starts. **Classes are described in Attachment 1.**
- 3.3. Races not sailed on the scheduled race day will not be rescheduled and will be scored void.

4. NOTICES

Notices to competitors and changes in the SSIs will be posted on the official regatta notice board located in the Rotunda of the RBVC. The notices MAY also be posted on the RBVC website: www.rbyc.bm.

5. CHANGES IN SUPPLEMENTAL SAILING INSTRUCTIONS

Changes to the SSIs will be posted before 0900 hrs on the day they take effect.

6. SAFETY

- 5.1 There will be 1 safety boat per 6 Optis on the water.

- 5.2 Competitors in difficulty shall obey instructions given by the Race Committee, an Official Boat or Coach Boat.

7 RACING AREA AND COURSES

- 7.1 The racing area is described in Attachment 2.
7.2 Courses are shown in Attachment 1.

8 THE START

- 8.1 The Starting Line will be a transit line between a staff displaying an orange triangle on the roof of the RBYC and the RBYC flagpole, with RBYC being the starboard end of the line.
8.2 A series of short sound signals may be made prior to a warning signal to inform of a Race Committee action.
8.3 A boat which starts later than four minutes after her starting signal will be scored DNS without a hearing. This changes rule A4 and A5.
8.4 **The 10 minute rolling start sequence will be as follows; this changes RRS 26:**
 - 10:55 warning with Class Flag raised
 - 11:01 Preparatory Signal raised
 - 11:04 Preparatory Removed
 - 11:05 Class 1 flag lowered/ Class 2 flag raised

8.5 Sequence of starts is Class 1, Class 2, Class 3, Class 4, Class 5 **(See Attachment 1)**.

9 THE FINISH

- 9.1 The Starting Line will be a transit line between a staff displaying an orange triangle on the roof of the RBYC and the RBYC flagpole, with RBYC being the port end of the line.

10 PROTESTS

- 10.1 Protest forms are available at the RBYC located in an envelope, marked Protest forms, located on the bulletin board in the rotunda. Completed protest forms shall be filed with the RC not later than sixty minutes after the docking of the Committee Boat. The end of Protest time limit will be posted on the official notice board.
10.2 The same protest time limit applies to all Protests by the RC about incidents they observe in the racing area and to Request for Redress.
10.3 A notice will be posted on the Notice Board as soon as possible after receipt of Protests to inform competitors there is a hearing in which they are parties to a Protest or named as witnesses.
10.4 The posting of hearing notices shall be considered notice as required by RRS 61 and 62.3.
10.5 We really don't want any protests, this is a fun event.

11 RETIREMENT

A competitor who has retired from a race before finishing shall be bound by SI 4.6 and shall report their retirement to the RC prior to leaving the course.

12 PENALTY SYSTEM

RRS 44.1 is changed so that a Two-Turns Penalty is replaced by the One-Turn Penalty.

15 COMMUNICATION

- 15.1 VHF communication on the operating channel 73 will be used by the RC for communication purposes between the RC and competitors/safety boats.

SSI September 11, 2018

15.2 Coach boats are required to carry a VHF radio.

15.3 Except in an emergency, a boat shall neither make nor receive radio, cellular phone or data transmissions while racing.

16 PRIZE GIVING

There will be a BBQ and prize giving following the conclusion of the race at the RBYC.

RBYC BART'S BASH SSI - ATTACHMENT 1

Courses and Classes

Course 1 (Green Fleet Optimists ONLY)

Start – 2R – Head of the Lane (S) –Finish

Course 2 (all other Class 1 boats other than Green Fleet)

Start – Timlins - G(S) - Pearl Island (S) - Head of Lane - Finish

Course 3 (all other Classes)

Start – Timlins - G (S) - E2 (S) - C1(S) - KP (S) - 102 (S) - 2R - Finish

Notes:

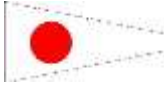

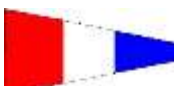

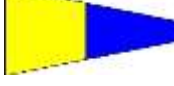
2R – 2 Rock Passage

KP – Cardinal mark east of Morgan's Point

C1 – Pancake mark closest to Rockaway Ferry

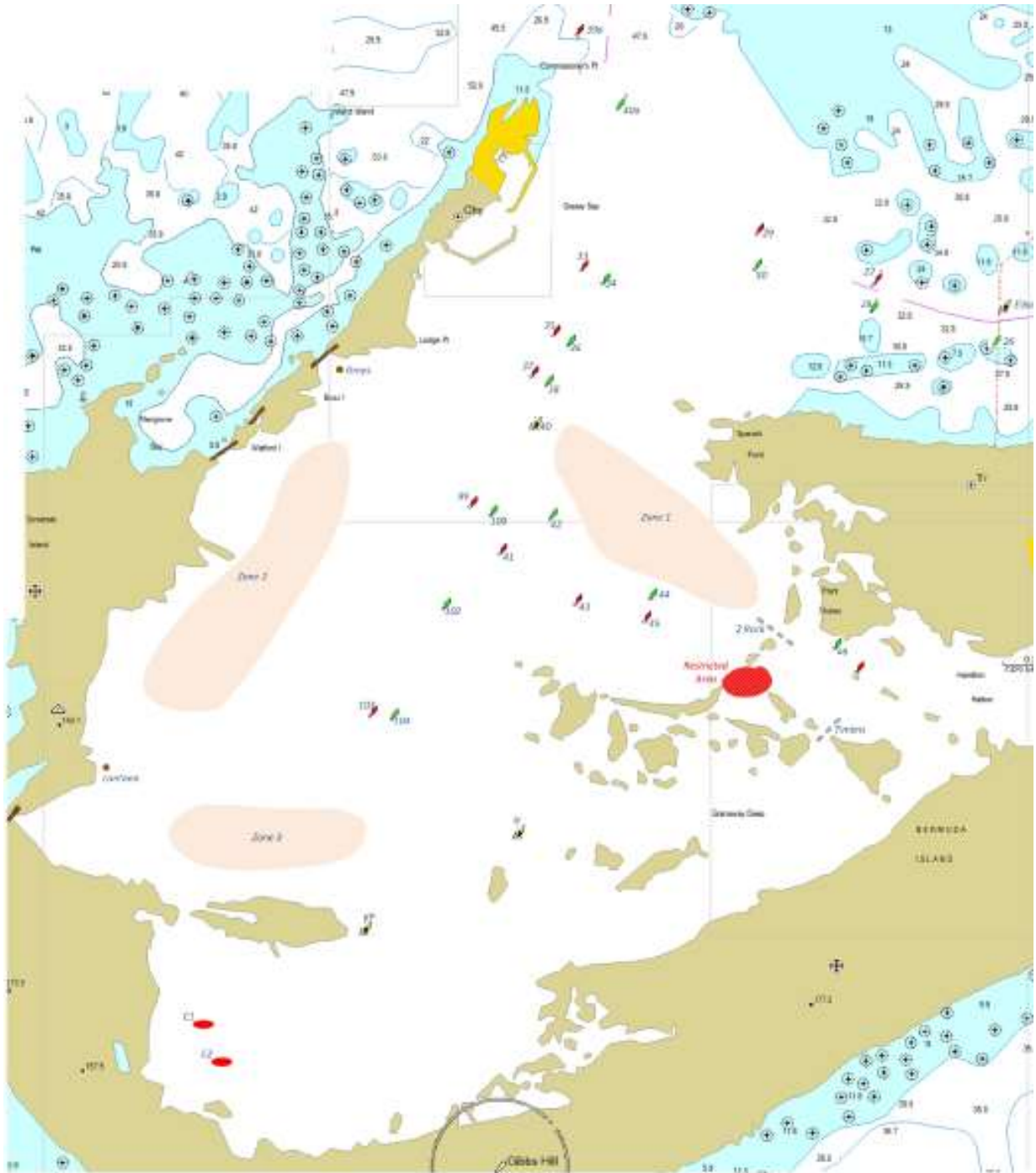
E2 – is the Pancake mark furthest from Rockaway Ferry

CLASSES

Class #	Flag	Boat Type
1		Optimist, Laser, Laser Radial, RS Feva, O'Pen Bic, Sunfish, 420s, etc.
2		Comets, SL16s, 29er, Hobies, Foiling Dinghies – Moths, Nacras.
3		PHRF +169 & Classic-type boats.
4		PHRF 100 – 168 (J24s, IODs, J80s etc.)
5		PHRF – 3 – 99 (Nasty, Cyclone, J105s, Crossfire, Vipers, etc.)

RBYC BART'S BASH SSI - ATTACHMENT 2

Course Area



NOT FOR NAVIGATION